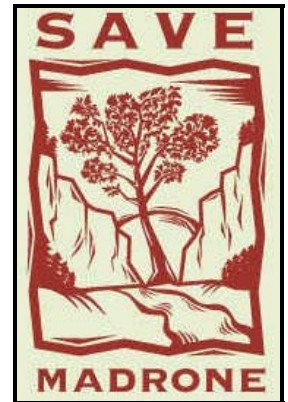


Madrone Wall Preservation Committee  
5815 N.E. 31st Avenue  
Portland, Oregon 97211  
www.savemadrone.org



9 February 2007

Representative Earl Blumenauer  
Oregon Third District  
United States House of Representatives  
Washington, DC 20515

Re: Madrone Wall/Hardscrabble Parks Master Planning – Federal Appropriations Request

Dear Representative Blumenauer:

I appreciate your letter of 1 February (attached) with enclosed "Oregon House Delegation Appropriations Request Form Fiscal Year 2008". As the Madrone Wall Preservation Committee has received this form, my all-volunteer, non-profit organization must have met some minimum requirement by your office for consideration for the federal appropriation request form to be sent to us.

As such, on behalf of the Madrone Wall Preservation Committee, I respectfully submit the attached Appropriation Request for **\$20,000** which presumably would be applied to offset a provisional \$40,000 Clackamas County budget for "Hardscrabble (a.k.a., Madrone Wall) Master Plan" which would take nine to twelve months starting with the Clackamas Board of County Commissioner authorization for their FY2007-2008 starting on 1 July.

**Endorsing Preservation:**

- Damascus City Council
- Grant Park CPO (Comm. Plan. Org.)
- Boring CPO
- Rock Creek CPO
- Eagle Creek-Barton CPO
- South Clackamas CPO
- Carver Store
- Carver Hangar
- Carver Curves Café
- Rock Garden Tavern
- Still Meadow Community
- Clackamas River Basin Council
- Damascus for Open Space
- Friends of Barton Pk. & Clack. Riv.
- Friends of Mount Hood
- Cooper Spur Wild and Free Coalition
- Oregon Natural Resources Council
- Oregon League of Conserv. Voters
- Native Plant Society of Oregon
- Sierra Club
- Audubon Society of Portland
- Friends of Forest Park
- Three Rivers Land Conservancy
- American Alpine Club
- Yvon Chouinard, Patagonia
- Fed. of Western Outdoors Clubs
- Oregon Equestrian Trails
- Outward Bound
- Mazamas
- Ptarmigans
- The Access Fund

We anticipate the Board of County Commissioners will authorize FY2007-2008 funding for the parks master planning in the May-June 2007 timeframe. Presumably, the \$20,000 federal appropriation solicited by this request would be matched by a reduced County expenditure of the same amount to complete the parks master plan in 2008. We believe this federal appropriation is appropriate because it would back-fill the significant drop in the Title III federal payments to the County resulting drastically reduced timber harvest revenues on the Mount Hood National Forest. It would allow the County, and the federal government, to help meet their own minimum open space requirements, something this park-barren area of the County truly needs in light of the anticipated population boom of Damascus. Furthermore, it would help federal agencies accomplish their missions to protect and manage the Clackamas River, a National Wild and Scenic River. Finally, it would help the federal government's efforts to promote child fitness and prevent obesity by helping establish a park that would give children an outlet in which to exercise and explore and learn of the great outdoors nearby to where they live.

If possible, I would like the opportunity to discuss this appropriations request with you and/or your staff at your Portland office between 16 and 26 February as your letter suggests. I can be flexible to meet at your office during your suggested window in February except for 18 through 21 February as I will be out of country on business travel. In December 2004, we provided a tour of this amazing civic treasure to your Environmental Field Representative, Hillary Barbour, so she can provide you a unique, first-hand perspective on what this site is and what a fine gem of a park it will be when established as a park and recreational access is once again restored. Thank you for your time and consideration.

**Grants Received From:**

- Mazamas
- The Access Fund
- American Alpine Club-Oregon
- Yvon Chouinard, Patagonia

Sincerely,

*Keith K. Daellenbach*

Keith K. Daellenbach (503/691-4102, kdaellenbach@att.net)  
Director, Secretary/Treasurer

enclosure:

- 1 February 2007: Letter from Congressman Blumenauer to Keith K. Daellenbach/MWPC
- Completed "Oregon House Delegation Appropriations Request Form Fiscal Year 2008" for Madrone Wall/Hardscrabble Parks Master Planning

The Madrone Wall Preservation Committee is a tax exempt 501(c)(3) Oregon all-volunteer public charitable organization focused on preserving and re-establishing access to the Madrone Wall of Clackamas County and to act as a parks advocacy organization for a future park at the site of this amazing civic treasure.

cc:

- appropriations.blumenauer@mail.house.gov
- Hillary Barbour, Environmental Field Representative, Office of U.S. Representative Earl Blumenauer
- Meeky Blizzard, Advisor for Livable Communities, Office of U.S. Representative Earl Blumenauer
- David Bragdon, Metro Council President
- Chris Carey, Vice President, MWPC, Portland, Oregon
- Jim Desmond, Director, Metro Regional Parks and Greenspaces Department
- Mary Gautreaux, Natural Resources Project Director, Field Representative, Office of U.S. Senator Ron Wyden
- Bill Kennemer, Commissioner, Clackamas Board of County Commissioners
- James Koski, Office of U.S. Representative Earl Blumenauer
- Robert Liberty, District 6 Metro Council Representative
- Marilyn Lippincott, Senior Grants Project Coordinator, Oregon Parks and Recreation Department
- Mike McLees, Supervisor, Clackamas County Parks and Forest
- Lynn Peterson, Vice Chair, Clackamas Board of County Commissioners
- Rod Park, District 1 Metro Council Representative
- Kellie Rice, President, MWPC, and Regional Coordinator/Western Oregon, The Access Fund, Portland, Oregon
- Martha Schrader, Chair, Clackamas Board of County Commissioners
- Gary Schmidt, Field Representative, Office of U.S. Senator Gordon Smith
- Gordon Smith, Senator, United States Senate
- Kathryn Sofich, Council Policy Coordinator, Office of District 1 Metro Council Representative Rod Park
- Dee Wescott, Mayor, Damascus City Council
- Dave Wright, Assistant Director, Acquisitions Committee, Oregon Parks and Recreation Department
- Ron Wyden, Senator, United States Senate
- Dan Zinzer, Director, Department of Business and Community Services, Clackamas County



# EARL BLUMENAUER

Congress of the United States ■ Third District, Oregon

February 1, 2007

Dear Mr. Daellenbach:

You have noticed the changes afoot in Washington, DC with the Democrats assuming control of both chambers and a recent flurry of activity as we kick off a new Congress. One significant development will be in the earmarking process. This was an area that exploded dramatically in recent years, more than doubling, with thousands of earmarks each year. The corruption of the process was a political issue and has had significant practical implications.

As you know, we have attempted to help as an office and as a delegation to navigate the appropriations process in a way to make it open and transparent to fund important Oregon projects. We want to continue doing this in a new era. Just because all of the pending earmarks have been canceled this last year does not mean that there are not opportunities in the future, but the process will be a little different. The good news is that the work that we have done together by being open, transparent, and pursuing things on their merits means that there will be less of a change for you and for me.

The information on the attached Oregon delegation form will be more important than ever to accurately and persuasively state the case for why federal funds are a necessary component of a project. These forms should be submitted to our office by Thursday, February 15. The form is also available on my website at <http://blumenauer.house.gov>.

Please email appropriations request forms to [appropriations.blumenauer@mail.house.gov](mailto:appropriations.blumenauer@mail.house.gov), and specify if you would like to schedule a meeting to discuss your request. We will then contact you to schedule meetings in my Portland office during the Presidents' Day district work period from Friday, February 16 through Monday, February 26.

James Koski or Janine Benner from my DC office, and Julia Pomeroy or Eric Chambers from my Portland office will be a part of these meetings, along with other key staff from both the Portland and DC offices. It is my intention to sit in on as many of these as I can. If you have questions about the process this year, please don't hesitate to contact James Koski at (202) 225-1058 or [james.koski@mail.house.gov](mailto:james.koski@mail.house.gov).

Sincerely,

Earl Blumenauer  
Member of Congress

Keith Daellenbach

Madrone Wall Preservation Committee

5815 NE 31<sup>st</sup> Avenue

Portland, OR 97211

2446 Rayburn Building, Washington, DC 20515 ■ 202.225.4811 FAX 202.225.8941

729 NE Oregon St., Suite 115, Portland, Oregon 97232 ■ 503.231.2300 FAX 503.230.5413

**OREGON HOUSE DELEGATION  
APPROPRIATIONS REQUEST FORM  
FISCAL YEAR 2008**

**Project Title (e.g. Interstate 5 Trade Corridor):**

**Madrone Wall/Hardscrabble Parks Master Planning**

**Grant recipient name and address (if the project is to be carried out in a location that is different from the grantee address, please provide that city and state):**

**Madrone Wall Preservation Committee  
5815 N.E. 31<sup>st</sup> Avenue  
Portland, Oregon 97211**

**Project Location: 43.99 acre Clackamas County-owned parcel (R23E17 03400) located 2.2 miles east of Carver, Oregon along County Scenic Road Highway 224.**

**Contact name, phone number, and e-mail:**

**Keith K. Daellenbach  
Director, Secretary/Treasurer  
503/691-4102  
kdaellenbach@att.net**

**Describe the organization's main activities, and whether it is a public, private non-profit, or private for-profit entity:**

**The Madrone Wall Preservation Committee is a tax exempt 501(c)(3) Oregon all-volunteer public charitable organization focused on preserving and re-establishing access to the Madrone Wall (a.k.a., Hardscrabble) of Clackamas County and to act as a parks advocacy organization for a future park at the site of this amazing civic treasure.**

**Briefly describe the activity or project for which funding is requested (please keep to 250 words or less, subcommittee online submission will not accept more):**

**The Clackamas County Parks Advisory Board (PAB) is presently working through a re-prioritization and refinement process for County Park projects. The Board of County Commissioners, in the May-June 2007 timeframe, will consider PAB and County Park recommendations and establish the County's FY2007/2008 budget which starts 1 July. Following up on a Board of County Commissioners' priority established in a Commissioner's study session on 31 January 2006, Clackamas County Parks has provisionally allocated \$40,000 to "Hardscrabble Master Plan" for parks master planning. This would plan for park activities and uses, capital expenses, traffic studies, on-site parking needs/design, and state highway approach. It would incorporate discussions with neighbors and interested parties and a required 120-day conditional use application required to allow for park activities on timber-zoned land (common for County park properties). The master plan should be completed in nine to twelve months after the fiscal year starts on 1 July this year.**

**Is this a new project?:**

**Yes.**

**Description of project's legal authorization (e.g. Transportation Bill, Energy Bill, etc.):**

*\* Not all projects are legally authorized and authorization is not a prerequisite for funding*

Legal authorization for commencing parks master planning is anticipated to be granted by the Clackamas Board of County Commissioners in the May-June 2007 timeframe.

Federal agency and account from which funds are requested (Please be specific –e.g. Department of Housing and Urban Development, Economic Development Initiatives account):

Possibly the U.S. Department of Agriculture (U.S. Forest Service), U.S. Department of Interior (Bureau of Land Management, U.S. Fish and Wildlife Service, National Park Service), or the U.S. Department of Health and Human Services. Congressman Blumenauer's office might have other suitable suggestions.

What is the national significance of the project, and what specific federal responsibility does the funding of this project or activity advance?:

While this park-creation project has received national attention from supporters living from coast-to-coast, as well as the national offices of organizations like The Access Fund (Boulder, Colorado), its scope is primarily regional and, specifically, within Oregon's Third District. That said, there are three nationally significant reasons to federally allocate an appropriation for this project:

1.) Reduced Federal Payments to County From Lower Timber Harvests on National Forests: The Mount Hood National Forest makes up a sizeable portion of rural Clackamas County yet its Title III payments for County projects has decreased dramatically in the last decade. This is the result of considerably reduced logging on National Forests. In 2006, for example, the value of all lumber harvested in the USDA-Forest Service Region 6 (Pacific Northwest) was \$63,597,690 which is only 34.5% of the value of all lumber harvested in Region 6 a decade ago in 1996 (source: [www.fs.fed.us/forestmanagement/reports/sold-harvest/](http://www.fs.fed.us/forestmanagement/reports/sold-harvest/)). This trickles down to severely curbed County budgets and less money available for projects such as those in County Parks. On one hand, the Clackamas County Parks Plan 2000 (February 1995) calls for a minimum of 131 acres of open space in the "Subarea 4 Damascus-Boring Area" (based on 1990 population), the area in which the Madrone Wall resides. Based on forecasted population growth, it is anticipated the area will need 259 acres of open space to meet minimum County park standards in 2015. To meet minimum national and state standards, nearly 200 acres of open space are required in 1990 and 400 acres in 2015. On the other hand, there are, to date, zero acres of County park land in this County-designated subarea. The population increase is, however, well on track to experience the forecasted population growth. With the recent incorporation of the adjacent City of Damascus in November 2004, this currently-rural area is expected to boom in population from 9,000 to over 60,000 people and will become one of Oregon's larger populated cities. In the "Public Response to (Damascus) Draft Concept Plan" (November 2005), a landslide of citizens (70%) overwhelmingly supported "the idea of a big park located on the bluffs and down to the Clackamas River." Given this County-owned site is already publicly owned thereby requiring no willing-seller land acquisition costs, it is prudent to respond to the local citizenry in this park-barren area by creating a park. This park will be an anchor for future open space acquisitions. With the recent passage of the Metro Regional Council's Measure 26-80, greenspace protection and willing-seller land acquisition in Metro's Clackamas River Bluffs and Greenway target area will help establish the eastside large regional park of greenspace lands and interconnected trails. A federal appropriation, to presumably be matched by Clackamas County, would be a prudent use of federal funds that would, in effect, back-fill the significant drop in the Title III federal payments to the County and allow the County – and the federal government – to help meet their own minimum open space requirements.

2.) National Wild and Scenic River: The Clackamas River, located less than a half mile from the Madrone Wall, is designated as a National Wild and Scenic River. It is the source of drinking water for nearby citizens and a clear, cool tributary stream supports the endangered salmon

habitat in the Clackamas River. By providing supplemental funding to augment the County's parks master planning provisional allocation via our non-profit organization, the federal government, with the primary responsible federal agencies (Bureau of Land Management-U.S. Department of Interior, U.S. Fish and Wildlife Service-DOI, National Park Service-DIO, and U.S. Forest Service-USDA), will be able to help accomplish its mission to protect and manage wild and scenic rivers.

3.) **Federal Government's Efforts to Promote Child Fitness and Prevent Obesity:** Just last week, on 1 February, President George Bush met in the Roosevelt Room of the White House with U.S. Department of Health and Human Services Secretary Mike Leavitt and leaders from the private sector to discuss ways to encourage children to exercise (source: [www.whitehouse.gov/news/releases/2007/02/20070201-1.html](http://www.whitehouse.gov/news/releases/2007/02/20070201-1.html)). President Bush specifically stated "One way for this nation to cope with the issue of obesity is to get people outside -- whether it be through sports or hiking or conservation. So we'll encourage them to do that, encourage parents to encourage their children to participate in the great outdoors." The park-creation effort at the Madrone Wall is directly linked to the President's notion for it would open a park in which citizens could exercise and recreate at by hiking, rock climbing, bird watching, and wildflower viewing. Furthermore, it will help families struggling to find productive outlets for their children to explore nature and the great outdoors near to where they live. This site will become an outside educational classroom for children to study geology, botany, and forestry. The first step, however, is to establish funding for the parks master planning effort and the federal government has an interest in helping to make this occur.

**Will funding also be sought by another Congressional Member? If so, who?:**

No.

# Funding Details

## I. Total project cost:

\$40,000.

## II. FY 2008 federal request:

\$20,000.

## III. Amounts of requests and funding in previous years (please specify if funding was requested from a different account/agency than the current request):

No previous federal appropriations have heretofore been requested.

## IV. Amounts expected to be requested in future years:

Four years after the County's provisional allocation for parks master planning, in FY2011-2012, is a second County Parks staff recommended allocation for \$300,000 for "Madrone Park Improvements". We alternatively advocate follow-on capital improvement funding immediately following completion of the parks master plan in 2008 rather than delaying implementation of the plan four years, as County Parks staff currently recommends. A federal appropriation for "Madrone Wall/Hardscrabble Parks Master Planning" in federal FY2008, and then potentially in subsequent years for "Madrone Park Improvements", would assist the County move the park-creation schedule along in a timely fashion. Without a federal funding appropriation, there is a potential that creating the park could be delayed many more years; note that it already has been nearly a decade since the site was closed to recreational access with no park for citizens yet.

Creating required on-site parking is identified as the single largest capital expense; other capital expenditures include a porta-potty, signage, and trail materials. We would like to submit future appropriations request form(s) to solicit subsequent federal contributions to help assist the County with necessary capital improvements.

## V. Breakdown/budget of the amount you are requesting for this project in FY 2008. (e.g. salary \$40,000; computer \$3,000):

At this date in the Clackamas County budget refinement process only \$40,000 has been allocated for the "Hardscrabble Master Plan" for parks master planning. This federal appropriations request form is seeking a federal contribution for one-half of this amount. As the master planning process gets closer to commencing, presumably following the start of the County's fiscal year on 1 July, the breakdown for budget items will receive definition. At this date, it is known the project would plan for park activities and uses, capital expenses, traffic studies, on-site parking needs/design, and state highway approach. It would incorporate discussions with neighbors and interested parties and a required 120-day conditional use application required to allow for park activities on timber-zoned land (common for County park properties).

## VI. Description of local, regional and/or state financial support (i.e. funding commitments to match federal dollars (Please provide specific dollar amount or percentage)):

Provisionally, Clackamas County has allocated a \$40,000 parks master planning budget for FY2007-2008 which starts 1 July. This federal appropriations request form for FY2008 is being submitted by the Madrone Wall Preservation Committee as a means to request a \$20,000 federal allocation which we would apply to offset the County's master planning provisional budget. It is

anticipated that the Clackamas Board of County Commissioners will authorize FY2007-2008 funding for the parks master planning in the May-June 2007 timeframe. Presumably, the \$20,000 federal appropriation solicited by this request would be matched by a reduced County expenditure for the same amount to accomplish the parks master plan.

In the last 12 months, the Madrone Wall Preservation Committee has explored a variety of potential funding sources that may be able to provide substantial matching grants for the \$300,000 County Parks staff recommendation for "Madrone Park Improvements". One of the reasons we are advocating the timely follow-on funding for these capital improvements following completion of the parks master plan in 2008, is because public and/or private philanthropic grants will be more accessible for successful grant proposals if the County commits funding in FY2008-2009. We have approached the following list of potential matching grant funding entities to discuss possible involvement in this park-creation effort: Oregon Parks and Recreation Department (Local Government Grant), Meyer Memorial Trust, The Oregon Community Foundation, Wessinger Foundation, Jubitz Family Foundation, The Ralph L. Smith Foundation, Recreational Equipment Incorporated, Keen Footwear Foundation, Patagonia, Mazamas, and The Access Fund.

**VII. Please list public or private organizations that have supported/endorsed this project:**

In 2005, we lead a major public outreach effort which led to over 500 people contacting the County Commissioners asking them to save the Madrone Wall and open a park. Zero communications were received by the County asking the Commissioners to sell the site for a private rock quarry or trophy home housing development. Over thirty citizen organizations, local governments and businesses as well as environmental organizations wrote endorsement letters including: Damascus City Council, Grant Park Community Planning Organization, Boring Community Planning Organization, Rock Creek Community Planning Organization, Eagle Creek-Barton Community Planning Organization, South Clackamas Community Planning Organization, Carver Store, Carver Hangar, Carver Curves Café, Rock Garden Tavern, Still Meadow Community, Clackamas River Basin Council, Damascus for Open Space, Friends of Barton Pk. & Clackamas River, Friends of Mount Hood, Cooper Spur Wild and Free Coalition, Oregon Natural Resources Council (now d.b.a. Oregon Wild), Oregon League of Conservation Voters, Native Plant Society of Oregon, Sierra Club, Audubon Society of Portland, Friends of Forest Park, Three Rivers Land Conservancy, American Alpine Club-Oregon, Yvon Chouinard (Patagonia), Federation of Western Outdoors Clubs, Oregon Equestrian Trails, Outward Bound, Mazamas, Ptarmigans, and The Access Fund. Organizational letters endorsing this project are listed on our website ([www.savemadrone.org](http://www.savemadrone.org)) under "01-17-06 Organization Support". We conservatively estimate the population served by a new park will be a minimum of 100,000 people of all ages, gender, and ethnicity. This represents a core population close to the site in the east Portland Metro area yet it will serve a much larger region of Portland and southwest Washington.

**VIII. Is this project scalable? (i.e. if partial funding is awarded, will the recipient organization be able to use the funds in FY 2008?):**

Assuming the provisional status of the County's \$40,000 parks master planning is ratified in May-June by the Clackamas Board of County Commissioners, the parks master plan should be completed in nine to twelve months after the County's fiscal year starts on 1 July. If the County proceeds with a timeline to fund the "Madrone Park Improvements" for capital expenditures immediately following completion of the parks master plan, in FY2008-2009, it is conceivable that the project would be scalable, i.e., funding could be applied to the capital expenditures necessary to create a park.

Submitted by Keith K. Daellenbach: 9 February 2007.