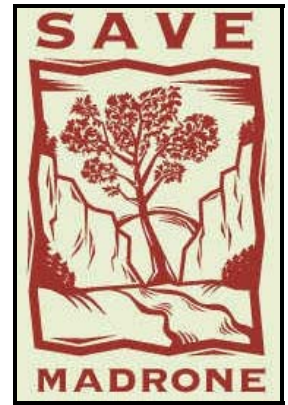


Madrone Wall Preservation Committee  
5815 N.E. 31st Avenue  
Portland, Oregon 97211  
www.savemadrone.org  
13 April 2007



Laura Herbon, Associate  
Walker Macy  
111 S.W. Oak Street, Suite 100  
Portland, Oregon 97204

Dear Laura:

Re: Thank you for Madrone Wall stakeholder interview – Metro Clackamas River Bluffs and Greenway target area

Thank you for interviewing me today at your downtown office as a stakeholder about the Madrone Wall (a.k.a. Hardscrabble) and its central location in Metro's Clackamas River Bluffs and Greenway target area. I hope my input will aid Metro's refinement process and ultimately lead to nearby favorable property acquisitions providing for additional preservation of the largely intact Clackamas Bluffs and for its future enjoyment by citizens.

We believe the Madrone Wall, requiring no willing-seller negotiations because it is already owned by Clackamas County and severely underserved by public parks (zero acres of parks in the Clackamas County Damascus-Boring sub area), will be an anchor for future interconnected public open space in this region. Considering the future protection of the Bluffs today is similar to where earlier proponents were at in 1949 when Forest Park was created and in 1969 when Tryon Creek State Park was created. Damascus will be nearly the size of Beaverton in the near future, a light-year away from the bucolic rural setting it presently enjoys, and I am optimistic that Metro targeting this area will result in preservation, recreational, and educational values to be long enjoyed by future generations.

Since the site's closure to public access in 1997, our decade long advocacy to prevent this site from being irretrievably destroyed as a hard rock quarry or developed into a trophy home housing development, to be preserved for all time as a public park, and to see it once again opened to public access, recreation, and education has assisted County move in the direction over 500 citizens and over 30 organizations (see ledger at left) recently advocated for – creation of a public park and reestablished access. I was happy to share with you the myriad elements that make this site a rare and incomparable amazing civic treasure. We are encouraged by the Clackamas County Parks' decision earlier this year to provisionally allocate funding for parks master planning, a nine to 12 month activity that, with Board of County Commissioner approval later this spring, will commence in the County's next fiscal year starting 1 July. This preservation and park creation project has been in the County queue for 10 years now and we strongly advocate that the momentum generated by next fiscal year's parks plan be followed up, as it is logically done so with other County Parks projects, by subsequent year funding allocating funding for capital expenses needed for items like on-site parking. Currently, County Park provisional funding plans show a disappointing and unnecessary one-year gap between completing the master planning and subsequent year allocations for capital improvement. Our non-profit, all-volunteer organization is working to assist the County to raise money and matching grants through federal, state, local, and philanthropic organizations which may help offset County funding. As this site becomes a park, we will evolve into a "Friends of ..." organization, capable of supporting the County and possibly even Metro if local land acquisitions are secured near the Madrone Wall.

I arranged, with Dan Zinzer, Director Department of Business and Community Services, to access this site for the purposes of providing a public tour this coming Sunday 22 April of this site. You and your colleagues are invited to join us on this Earth Day tour to witness one of the finest displays of wildflowers anywhere in the northern Willamette Valley. We will be meeting at the nearby Still Meadow Community retreat center (16561 S.E. Marna Road, Clackamas, [www.stillmeadowcommunity.com](http://www.stillmeadowcommunity.com)) at 3:00 p.m. and, after an introduction, we will carpool to the site a half mile away. We hope to see you there and let me know if I can be of further assistance to provide input as a enthusiastic stakeholder for this remarkable area.

Sincerely,

A handwritten signature in black ink that reads "Keith K. Daellenbach".

Keith K. Daellenbach (503/691-4102, [kdaellenbach@att.net](mailto:kdaellenbach@att.net))  
Director, Secretary/Treasurer

**Endorsing Preser. & Park:**

- > 500 Citizen Letters
- Damascus City Council
- Grant Park CPO (Comm. Plan. Org.)
- Boring CPO
- Rock Creek CPO
- Eagle Creek-Barton CPO
- South Clackamas CPO
- Carver Store
- Carver Hangar
- Carver Curves Café
- Rock Garden Tavern
- Still Meadow Community
- Clackamas River Basin Council
- Damascus for Open Space
- Friends of Barton Pk. & Clack. Riv.
- Friends of Mount Hood
- Cooper Spur Wild and Free Coalition
- Oregon Natural Resources Council
- Oregon League of Conserv. Voters
- Native Plant Society of Oregon
- Sierra Club
- Audubon Society of Portland
- Friends of Forest Park
- Three Rivers Land Conservancy
- American Alpine Club
- Yvon Chouinard, Patagonia
- Fed. of Western Outdoors Clubs
- Oregon Equestrian Trails
- Outward Bound
- Mazamas
- Ptarmigans
- The Access Fund

**Grants Received From:**

- Mazamas
- The Access Fund
- American Alpine Club-Oregon
- Yvon Chouinard, Patagonia

**Awards:**

- Montague Cup/Conservation (Mazamas, 2006)
- Sharp End Award (The Access Fund, 2005)

The Madrone Wall Preservation Committee is a tax exempt 501(c)(3) Oregon all-volunteer public charitable organization focused on preserving and re-establishing access to the Madrone Wall of Clackamas County and to act as a parks advocacy organization for a future park at the site of this amazing civic treasure.

cc:

- Dean Apostol, Director, Damascus for Open Space
- Don Arbuckle, Chair, Grant Park Community Planning Organization
- Linda Baysinger, Parks Advisory Board, Clackamas County
- Hillary Barbour, Environmental Field Representative, Office of U.s. Representative Earl Blumenauer
- Dorothy Barello, Friends of Barton Park & the Scenic Clackamas River
- Todd Blossom, Head Land Steward, Still Meadow Community
- Meeky Blizzard, Advisor for Livable Communities, Office of U.s. Representative Earl Blumenauer
- Virginia Bowers, Conservation Program Director, Three Rivers Land Conservancy
- David Bragdon, Metro Council President
- Chris Carey, Vice President, Director, Madrone Wall Preservation Committee
- Mary Cook Swanson, Senior Planner, Department of Transportation and Development, Clackamas County
- Jayne Cronlund, Executive Director, Three Rivers Land Conservancy
- Jim Desmond, Director, Regional Parks and Greenspaces Department
- Jo Anne Dolan, Associate Public Affairs Specialist, Metro
- Althea Dorman, Parks Advisory Board, Clackamas County
- William Eadie, Real Estate Negotiator, Regional Parks and Greenspaces Department
- Mike Ferrell, Parks Advisory Board, Clackamas County
- Terry Ferrucci, Staff to the Board, Clackamas County
- Mary Gautreaux, Natural Resource Project Director, Field Representative, Office of U.S. Senator Ron Wyden
- Janelle Geddes, Restoration Grants Coordinator, Nature in Neighborhoods, Regional Parks and Greenspaces Department
- Cam Gilmour, Director, Department of Transportation and Development, Clackamas County
- Karen Harte, Manager, Still Meadow Community
- John Hartsock, Council President, Damascus City Council
- Pam Hayden, Policy Analyst, Department of Transportation and Development, Clackamas County
- Angie Kimpo, Natural Resource Scientist/Botanist, Regional Parks and Greenspaces Department
- Bill Kennemer, Commissioner, Clackamas County Board of Commissioners
- Dan Kromer, Parks Advisory Board, Clackamas County
- Barb Ledbury, Councilor, Damascus City Council
- Robert Liberty, District 6 Metro Council Representative- Marilyn Lippincott, Senior Grants Project Coordinator, Oregon Parks and Recreation Department
- Jon Mantay, County Administrator, Clackamas County
- Earlean Marsh, President, Friends of Barton Park & the Scenic Clackamas River
- Mike McLees, Supervisor, Clackamas County Parks and Forest, Clackamas County
- Linnea Nelson, Assistant, District 6 Metro Council Representative Robert Liberty
- Rod Park, District 1 Metro Council Representative
- Lynn Peterson, Vice Chair, Commissioner, Clackamas County Board of Commissioners
- Paula Preston-Mills, Clackamas County Parks and Forest, Clackamas County
- Kellie Rice, President, Director, Madrone Wall Preservation Committee
- Marcia Robertson, Parks Advisory Board, Clackamas County
- Gary Schmidt, Field Representative, Office of U.S. Senator Gordon Smith
- Martha Schrader, Chair, Commissioner, Clackamas County Board of Commissioners
- Randy Shannon, Councilor, Damascus City Council
- Craig Smith, Parks Advisory Board, Clackamas County
- Rob Smoot, Chair, Parks Advisory Board, Clackamas County
- Kathryn Sofich, Council Policy Coordinator, Office of District 1 Metro Council Representative Rod Park
- Tom Taylor, Parks Advisory Board, Clackamas County
- Jay Ward, Business Liason, Office of U.S. Senator Ron Wyden
- Dee Wescott, Mayor, Damascus City Council
- Hillary Wilton, Open Spaces Acquisition Division, Regional Parks and Greenspaces Department
- Carol Witbeck, Friends of Barton Park & the Scenic Clackamas River
- Dave Wright, Assistant Director, Acquisitions Commission, Oregon Parks and Recreation Department
- Jim Wright, Councilor, Damascus City Council
- Dan Zinzer, Director Department of Business and Community Services, Clackamas County
- Joan Zuber, Vice Chair, South Clackamas Community Planning Organization