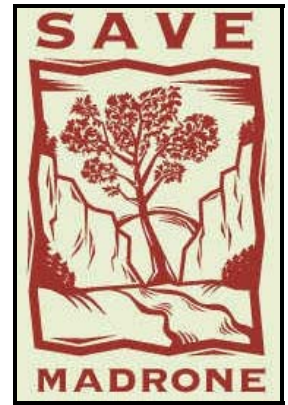


Madrone Wall Preservation Committee
5815 N.E. 31st Avenue
Portland, Oregon 97211
www.savemadrone.org
8 August 2007



Katie Drennan, Legislative Assistant
Office of Representative Earl Blumenauer
United States House of Representatives, Oregon Third District
2267 Rayburn Building
Washington, DC 20515
VIA: email

Dear Ms. Drennan:

There are no concerns about not hearing from Representative Blumenauer's office in regards to our February appropriations request (attached) until yesterday. Your's is a busy office and we had assumed all along that it was up to us inquire about status at some point; your Grants Workshop letter last week (attached) prompted me to do this. It is apparent that appropriations are scarce with the current federal government fiscal cycle and our request was not granted. Although the Madrone Wall Preservation Committee is an all-volunteer non profit and we do not employ a grant writer, our grant requests to the Meyer Memorial Trust and Jubitz Family Foundation were awarded earlier year and these will help us perform continued necessary public outreach, in partnership with the Clackamas County, as the County works through the parks master planning process seeking public input and involvement.

Endorsing Preser. & Park:

- > 500 Citizen Letters (2005)
- Damascus City Council
- Grant Park CPO (Comm. Plan. Org.)
- Boring CPO
- Rock Creek CPO
- Eagle Creek-Barton CPO
- South Clackamas CPO
- Carver Store
- Carver Hangar
- Carver Curves Café
- Rock Garden Tavern
- Still Meadow Community
- Clackamas River Basin Council
- Damascus for Open Space
- Friends of Barton Pk. & Clack. Riv.
- Friends of Mount Hood
- Cooper Spur Wild and Free Coalition
- Oregon Natural Resources Council
- Oregon League of Conserv. Voters
- Native Plant Society of Oregon
- Sierra Club
- Audubon Society of Portland
- Friends of Forest Park
- Three Rivers Land Conservancy
- American Alpine Club
- Yvon Chouinard, Patagonia
- Fed. of Western Outdoors Clubs
- Oregon Equestrian Trails
- Outward Bound
- Mazamas
- Ptarmigans
- The Access Fund

Our organization is focused primarily on the park creation effort at the County's Madrone Wall/Hardscrabble property, however, we believe this already-public site will be an anchor for future acquisitions along the Clackamas River bluffs will help form what will be a large eastside park in an underserved area experiencing rapid population growth. This area is receiving significant attention by the Metro Council which just yesterday, at a work session I observed, agreed that "protect(ing) scenic views and provid(ing) future recreational opportunities by acquiring lands along the Clackamas River bluffs" should be a Tier I objective for willing-seller land acquisition as a part of their 2006 Greenspace bond measure. Metro believes "the Bluffs provide the last opportunity to secure a large regional park site within this rapidly developing portion of Clackamas County" and estimates 450 acres of land could be protected in this target area. Metro expects completed refinement plans for all target areas this September.

For over a decade and at every opportunity the public has shown their overwhelming support for this amazing civic treasure starting with massive opposition to an ill-conceived County rock quarry in 1997. In 2005, over 500 people communicated to the Board of County Commissioners to not sell this public site as a private quarry or trophy home housing development and to establish a public park. The Commissioners unanimously responded in 2006 by agreeing to not sell the site and to make it a priority in the parks master planning process. Responding to recent Metro public input solicitation, Metro received over 700 completed surveys to help prioritize objectives for 27 "target areas". One target area, Clackamas Rivers Bluffs and Greenway in which the Madrone Wall resides, received 20% of the overall survey responses (Metro Council packet attached)! The vast majority advocated re-opening of the Madrone Wall to recreational access and a priority for land acquisition along the bluffs.

Grants Received From:

- Meyer Memorial Trust
- Jubitz Family Foundation
- Mazamas
- The Access Fund
- American Alpine Club-Oregon
- Yvon Chouinard, Patagonia

This spring, the Commissioners allocated funding for a nine to 12 month parks planning process which started last month with the beginning of the County's fiscal year. Even though there is a one year gap between County Park provisional funding allocation following this year's planning process and subsequent capital expenditures, primarily needed to create parking, we are encouraged by progress and hopeful that the park will be created soon.

Awards:

- Montague Cup/Conservation (Mazamas, 2006)
- Sharp End Award (The Access Fund, 2005)

In the coming next couple years, substantial capital expenditures will be necessary to complete this park creation project. As such, if your office believes there may be a even a small potential for a federal earmark to offset capital expenditures, please have your office contact me about submitting a future federal appropriations request. As a parks advocate, one of our current goals is to assist Clackamas County identify and secure funding that can offset capital expenditures in a public-private partnership. Thank you for your interest and feedback.

The Madrone Wall Preservation Committee is a tax exempt 501(c)(3) Oregon all-volunteer public charitable organization focused on preserving and re-establishing access to the Madrone Wall of Clackamas County and to act as a parks advocacy organization for a future park at the site of this amazing civic treasure.

Sincerely,

Keith K. Daellenbach

Keith K. Daellenbach (503/691-4102, kdaellenbach@att.net)
Director, Secretary/Treasurer

encl.:

- 02/09/07 Madrone Wall/Hardscrabble Parks Master Planning – Federal Appropriations Request
- 08/03/07 Grants Workshop notice
- 08/08/07 Metro Council work session packet (Clackamas River Bluffs and Greenspace target area)

cc:

- appropriations.blumenauer@mail.house.gov
- Don Arbuckle, Chair, Grant Park Community Planning Organization, Clackamas County
- Hillary Barbour, Environmental Field Representative, Office of U.S. Representative Earl Blumenauer
- Linda Baysinger, Member, Parks Advisory Board, Clackamas County
- Meeky Blizzard, Advisor for Livable Communities, Office of U.S. Representative Earl Blumenauer
- Earl Blumenauer, Representative, United States House of Representatives
- David Bragdon, Metro Council President
- Kathleen Brennan-Hunter, Natural Areas Bond Measure Manager, Metro Regional Parks and Greenspaces Department
- Chris Carey, Vice President, MWPC, Portland, Oregon
- Jim Desmond, Director, Metro Regional Parks and Greenspaces Department
- Jo Anne Dolan, Associate Public Affairs Specialist, Metro Regional Parks and Greenspaces Department
- William Eadie, Real Estate Negotiator, Metro Regional Parks and Greenspaces Department
- Mike Ferrell, Member, Parks Advisory Board, Clackamas County
- Mary Gautreaux, Natural Resources Project Director, Field Representative, Office of U.S. Senator Ron Wyden
- Janelle Geddes, Restoration Grants Coordinator, Metro Regional Parks and Greenspaces Department
- Cam Gilmour, Director, Department of Transportation & Development, Clackamas County
- Pam Hayden, Policy Analyst, Department of Transportation & Development, Clackamas County
- John Hartsock, Council President, Damascus City Council
- Cliff Houck, Property Manager, Oregon Parks and Recreation Department
- Bill Kennemer, Commissioner, Clackamas Board of County Commissioners
- Angie Kimpo, Natural Resources Scientist/Botanist, Metro Regional Parks and Greenspaces Department
- James Koski, Office of U.S. Representative Earl Blumenauer
- Dan Kromer, Member, Parks Advisory Board, Clackamas County
- Barb Ledbury, Councilor, Damascus City Council
- Robert Liberty, District 6 Metro Council Representative
- Tom Lichty, Publisher/Editor, *The Damascus-Boring Observer*
- Marilyn Lippincott, Senior Grants Project Coordinator, Oregon Parks and Recreation Department
- Mike McLees, Supervisor, Clackamas County Parks and Forest, Clackamas County
- Jim Morgan, Program Supervisor, Metro Regional Parks and Greenspaces Department
- Brian Newman, District 2 Metro Council Representative
- Lynn Peterson, Vice Chair, Clackamas Board of County Commissioners
- Paula Preston-Mills, Clackamas County Parks and Forest, Clackamas County
- Rod Park, District 1 Metro Council Representative
- Kellie Rice, President, MWPC, and Regional Coordinator/Western Oregon, The Access Fund, Portland, Oregon
- Russ Richards, Planner, Oregon Parks and Recreation Department
- Marcia Robertson, Member, Parks Advisory Board, Clackamas County
- Michele Scalise, Grant Project Coordinator, Oregon Parks and Recreation Department
- Martha Schrader, Chair, Clackamas Board of County Commissioners
- Gary Schmidt, Field Representative, Office of U.S. Senator Gordon Smith
- Randy Shannon, Councilor, Damascus City Council
- Al Sheakley, Vice Chair, Parks Advisory Board, Clackamas County
- Craig Smith, Member, Parks Advisory Board, Clackamas County
- Gordon Smith, Senator, United States Senate
- Kathryn Sofich, Council Policy Coordinator, Office of District 1 Metro Council Representative Rod Park
- Mary Cook Swanson, Senior Planner, Department of Transportation & Development, Clackamas County
- Tom Taylor, Member, Parks Advisory Board, Clackamas County
- Jay Ward, Business Liaison, Office of U.S. Senator Ron Wyden
- Dee Wescott, Mayor, Damascus City Council
- Hillary Wilton, Natural Areas Acquisitions, Metro Regional Parks and Greenspaces Department
- Dave Wright, Assistant Director, Acquisitions Committee, Oregon Parks and Recreation Department
- Jim Wright, Councilor, Damascus City Council
- Ron Wyden, Senator, United States Senate
- Dan Zinzer, Director, Department of Business and Community Services, Clackamas County
- Joan Zuber, Vice Chair, South Clackamas Community Planning Organization