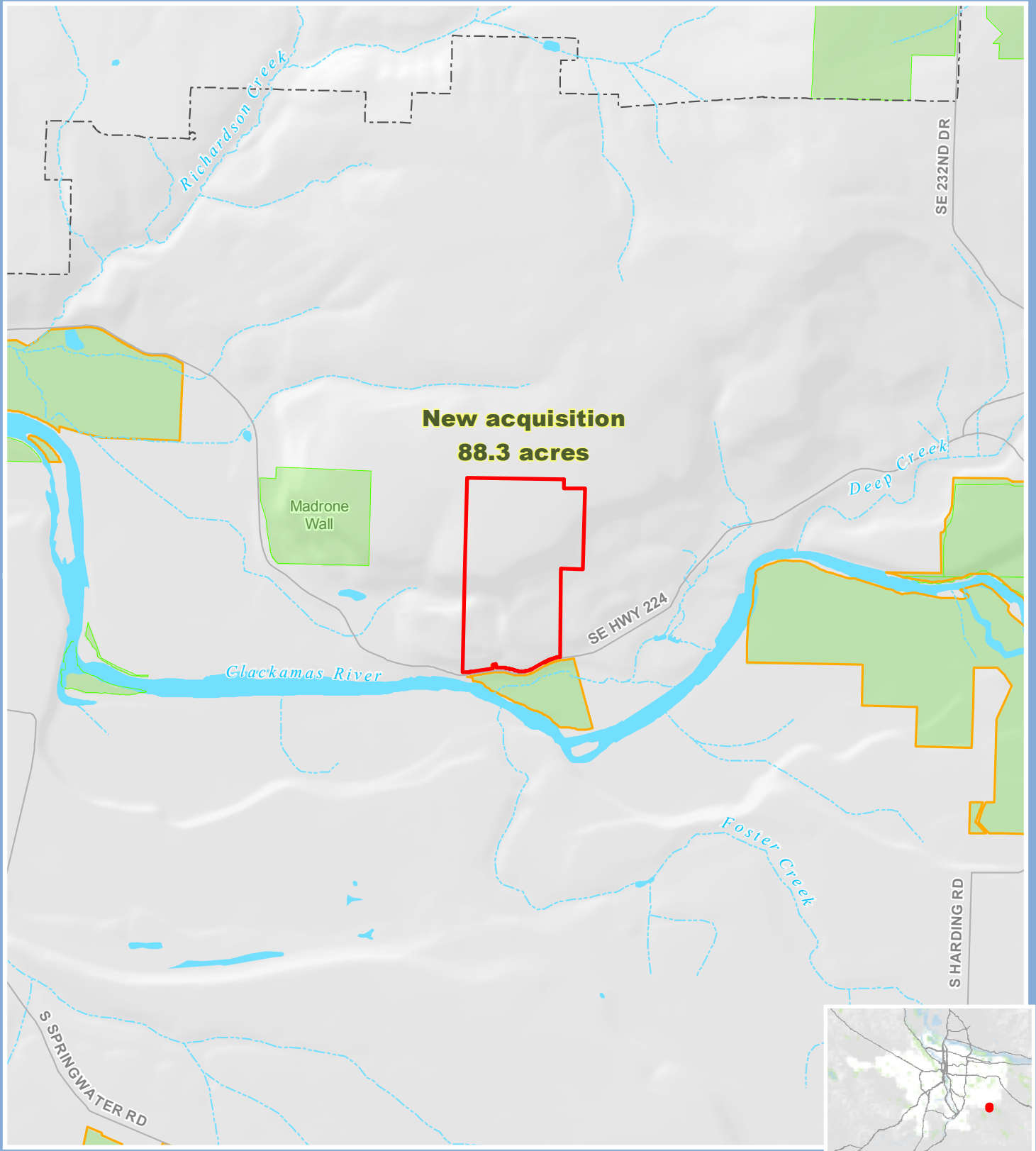


# Clackamas River Bluffs & Greenway



**New acquisition  
88.3 acres**

Madrone  
Wall

Clackamas River

Deep Creek

Foster Creek




SE HWY 224

SE 232ND DR

S HARDING RD

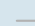
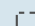

S SPRINGWATER RD

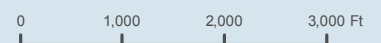
18.039

-  New Metro acquisition
-  Metro protected natural area
-  Other public and/or protected lands

Metro's Natural Areas Program protects thousands of acres of fish and wildlife habitat, safeguards water quality and provides people with greater access to nature. For more information visit [www.oregonmetro.gov/naturalareas](http://www.oregonmetro.gov/naturalareas).



-  Main Roads
-  Urban Growth Boundary (UGB)
-  Water Features



Metro news release

October 30, 2009

*Metro contact:* Heather Nelson Kent  
[heather.kent@oregonmetro.gov](mailto:heather.kent@oregonmetro.gov)  
503-797-1739 office, 503-860-6145 mobile

## **Metro gets batty with purchase of 88 acres in the Clackamas River Bluffs**

*Land acquisition protects geologically unique area with an old growth forest and three species of bats*

It would not be Halloween without a few bats fluttering about in the skies, eager to zoom down with radar precision upon unsuspecting victims and gobble them up – by the thousands. Thousands of mosquitoes and other insects, that is. For some bats that's as many as a 2,000 per night. Throughout modern history, bats have earned an undeservedly bad reputation, despite their impressive ability to help manage large populations of pesky insects.

Metro's acquisition of 88 acres in the Clackamas River Bluffs and Greenway target area represents a victory for bats and bat-lovers in this region. The property offers habitat essential to three of these increasingly rare species – old trees and snags. In the Portland area, most bats roost (sleep or rest) in old trees and snags when they are not hibernating. As this habitat disappears in our urban areas, so have bats.

"If it were not for their ghoulish nature, these furry little flying creatures might be as well-loved as the family dog – and much more useful," said Metro Council President David Bragdon. "I'm pleased we can help protect them."

Located on the north side of Highway 224 between Carver and Barton parks in Clackamas County, the property is notable for its remarkable mixture of old growth forest, a talus (boulder) cave network and the striking Clackamas River Bluffs. The large parcel establishes a substantial foundation upon which conservation and future acquisitions efforts by Metro, Clackamas County and land conservation groups can build upon.

"This is a great example of how the land acquisition program that voters approved in 2006 benefits species large, small and even spooky," said Metro Councilor Carlotta Collette who represents the district where the property is located. "Our vision is for a connected corridor along the bluff that will protect habitat for sensitive species like bats and other wildlife."

The Clackamas River Bluffs and Greenway is one of the 27 areas identified for protection in Metro's voter-approved 2006 Natural Areas bond measure. The program funds land acquisition and capital improvements that protect water quality and fish and wildlife habitat, enhance trails and wildlife corridors, and provide greater connections to nature in urban areas throughout the Portland metropolitan area. For more information, visit [www.oregonmetro.gov/naturalareas](http://www.oregonmetro.gov/naturalareas).

Metro, the regional government that serves 1.4 million people who live in the 25 cities and three counties of the Portland metropolitan area, provides planning and other services that protect the nature and livability of our region.

###

Map: Clackamas River Bluffs and Greenway acquisition by Metro.  
Photo Copyright Bat Photography LLC: Townsend's big-eared bat, photo by J. Scott Altenbach, [jsa@batphotography.com](mailto:jsa@batphotography.com)