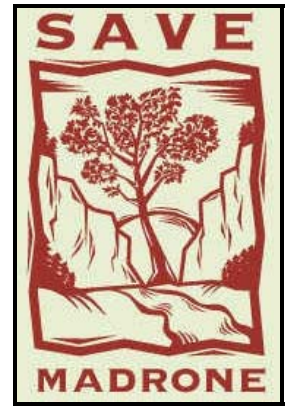


Madrone Wall Preservation Committee  
5815 N.E. 31st Avenue  
Portland, Oregon 97211  
www.savemadrone.org  
8 December 2006



Clackamas County Board of Commissioners  
Commissioner Bill Kennemer (billken@co.clackamas.or.us)  
Commissioner-Elect Lynn Peterson (lynn@lapconsulting.com)  
Commissioner Martha Schrader (marthasch@co.clackamas.or.us)  
2051 Kaen Road  
Oregon City, Oregon 97045  
(VIA email: bcc@co.clackamas.or.us, 503/655-8581)

Re: Request Parks Master Planning for Hardscrabble/Madrone Wall in 2007

Dear Commissioner Kennemer, Commissioner-Elect Peterson, Commissioner Schrader:

After nearly a year in 2005 spent collecting input from hundreds of citizens, five local Community Planning Organizations (CPO's), City of Damascus government, Carver businesses, public organizations (Metro, State Parks, etc.), and over 30 organizations total (see ledger at left), the Board of County Commissioners (BCC) unanimously accepted, at the 31 January 2006 Study Session, the Clackamas County Parks Advisory Board (PAB) recommendations that the Hardscrabble property (a.k.a. Madrone Wall) become part of the Clackamas River Watershed Protection and not be sold to a private interest or mined. The unanimously-accepted recommendations included making this site a priority for parks master planning (see attached 02/01/06 press release).

Our tax exempt 501(c)(3) Oregon all-volunteer public charitable organization is focused on preserving and re-establishing access to the Madrone Wall and to act as a parks advocacy organization for a future park at the site of this amazing civic treasure. From our continued involvement attending monthly PAB meetings and from discussions with Dan Zinzer, Director of Department of Business and Community Services, we understand the next steps necessary to establish a park are for the PAB to recommend authorizing funding for Hardscrabble/Madrone Wall parks master planning early next year and for the BCC to accept this recommendation next Spring.

At last month's PAB meeting, a list of park planning items was distributed and this will be evaluated and re-prioritized at the January and February PAB meetings. On this list under "General Parks - Miscellaneous" was an itemization of \$40,000 for parks master planning at Hardscrabble. Given the overwhelming positive response from over 500 citizens along with organizations previously identified, the massive anticipated Damascus population growth in an area already severely underserved by parks (*2000 County Parks Master Plan*, in the self-described "Damascus-Boring Area", calls for 131 park acres in 1995 and 259 acres in 2015 yet offers zero park acres), and the BCC's own insistence to make parks master planning a priority for this site, we request the PAB recommend authorizing parks master planning funding in February and follow-on BCC authorization in Spring 2007.

We remain committed to providing a minimum of 1,000 volunteer hours within the first year the park is created to help the County remove illegally dumped rubbish and improve/create hiking trails. Delivering on this commitment will be easy because of the incredible pent-up enthusiasm to re-establish access. We are also working on financial strategies that could help offset County park start-up and operation costs identified in the parks master plan. We have raised several thousand dollars for this purpose and are in discussions with several philanthropic foundations which may be also be able to contribute. One potential strategy could involve applying for a Oregon Parks and Recreation Department (OPRD) Local Government Grant (LGG). OPRD seeks development and rehabilitation projects that are ready to go and can be completed within two years for public outdoor park and recreation areas open and accessible to the public-at-large. This site appears to dovetail nicely with all OPRD criteria and, with private cash donations and substantial committed volunteer hours, this approach would be a public/private win-win. Additionally, we have lined-up several professionals, including cartographers and traffic engineers, willing to donate pro bono time to assist the planning process and create parking plans further reducing County costs. I am sure other successful strategies exist if you, County Parks, and the PAB, take the next step to make this much-needed park a reality. Please take that next step by making it a priority in 2007. Thank you for your consideration.

**Endorsing Preservation:**

- Damascus City Council
- Grant Park CPO (Comm. Plan. Org.)
- Boring CPO
- Rock Creek CPO
- Eagle Creek-Barton CPO
- South Clackamas CPO
- Carver Store
- Carver Hangar
- Carver Curves Café
- Rock Garden Tavern
- Still Meadow Community
- Clackamas River Basin Council
- Damascus for Open Space
- Friends of Barton Pk. & Clack. Riv.
- Friends of Mount Hood
- Cooper Spur Wild and Free Coalition
- Oregon Natural Resources Council
- Oregon League of Conserv. Voters
- Native Plant Society of Oregon
- Sierra Club
- Audubon Society of Portland
- Friends of Forest Park
- Three Rivers Land Conservancy
- American Alpine Club
- Yvon Chouinard, Patagonia
- Fed. of Western Outdoors Clubs
- Oregon Equestrian Trails
- Outward Bound
- Mazamas
- Ptarmigans
- The Access Fund

The Madrone Wall Preservation Committee is a tax exempt 501(c)(3) Oregon all-volunteer public charitable organization focused on preserving and re-establishing access to the Madrone Wall of Clackamas County and to act as a parks advocacy organization for a future park at the site of this amazing civic treasure.

Sincerely,

*Keith K. Daellenbach*

Keith K. Daellenbach (503/691-4102, kdaellenbach@att.net)  
Director, Secretary/Treasurer

Attachments:

- 1 February 2006 Madrone Wall Preservation Committee Press Release (“Clackamas County Commissioners Approve Madrone Wall for Parks Master Planning Process”)

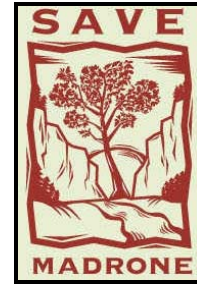
cc:

- Vik Anantha, Co-Chair, Conservation Committee, Mazamas
- Dean Apostol, Director, Damascus for Open Space
- George Allen, Vice Chair, Rock Creek CPO
- Don Arbuckle, Chair, Grant Park CPO
- Hillary Barbour, Environmental Field Representative, Office of U.S. Representative Earl Blumenauer
- Dorothy Barello, Friends of Barton Park & the Scenic Clackamas River
- Russell Bassett, Journalist/Photographer, *Molalla Pioneer*
- Linda Baysinger, Member, Parks Advisory Board, Clackamas County
- Marty Beaudet, Political Correspondent, *The Damascus-Boring Observer*
- Todd Blossom, Head Land Steward, Still Meadow Community, Carver
- Chuck Bolsinger, Staff Writer, *The Damascus-Boring Observer*
- Barbara Bond, Mazamas Council
- Virginia Bowers, Conservation Program Director Three Rivers Land Conservancy
- David Bragdon, Metro Council President
- Phyllis Brinkley, President, Eagle Creek-Barton CPO
- Deanne Buck, Program Director, The Access Fund
- Chris Carey, Vice President, Madrone Wall Preservation Committee
- Michael Carlson, Council Coordinator, Clackamas River Basin Council
- Wanda Cochran, Assistant Bureau Chief, Metro South, *The Oregonian*
- Jayne Cronlund, Executive Director, Three Rivers Land Conservancy
- Terri Cummings, Mazamas Council
- Jim Desmond, Director, Regional Parks and Greenspaces Department, Metro
- Jo Anne Dolan, Outreach & Communications Coordinator, Clackamas River Basin Council
- Althea Dorman, Member, Parks Advisory Board, Clackamas County
- Keith Dubanevich, President, Mazamas Council
- William Eadie, Real Estate Negotiator, Regional Parks and Greenspaces Department, Metro
- Mike Ferrell, Member, Parks Advisory Board, Clackamas County
- Lori Freeman, , Mazamas Council
- Mary Gautreaux, Natural Resources Project Director, Office of U.S. Senator Ron Wyden
- Janelle Geddes, Restoration Grants Coordinator, Regional Parks and Greenspaces Department, Metro
- Niel Gibson, Northwest Outreach Coordinator, Outward Bound
- Cam Gilmour, Director, Department of Transportation and Development, Clackamas County
- Malcolm Hamilton, Recreational Program Manager, United States Forest Service, Mt. Hood National Forest
- Matthew Hampton, Professional Cartographer
- Marty Hanson, Membership Services Administrator, Mazamas
- Joseph Hargrave, Secretary, Federation of Western Outdoor Clubs
- Karen Harte, Manager, Still Meadow Community, Carver
- John Hartsock, Councilor, City of Damascus
- Pam Hayden, Policy Analyst, Department of Transportation and Development, Clackamas County
- Mike Houck, Director/Urban Greenspaces Institute, Urban Naturalist, Audubon Society of Portland
- Sarah Hunsberger, Reporter, Clackamas County/Growth, Metro South, *The Oregonian*
- Gerry Itkin, Mazamas Council
- Angie Kimpo, Natural Resource Scientist/Botanist, Regional Parks and Greenspaces Department, Metro
- Phyllis Kirk, Secretary, Friends of Mount Hood
- Dan Kromer, Member, Parks Advisory Board, Clackamas County
- Jim Labbe, Urban Conservationist, Audubon Society of Portland
- Keith Langenwalter, Mazamas Council
- Barb Ledbury, City of Damascus
- Robert Liberty, District 6 Metro Council Representative
- Tom Lichty, Publisher/Editor, *The Damascus-Boring Observer*
- Marilyn Lippincott, Senior Grants Coordinator, Oregon Parks and Recreation Department
- Steven Lounsbury, County Counsel, Office of County Counsel, Clackamas County
- Ivan Maluski, Statewide Grassroots Organizer, Sierra Club, Oregon Chapter
- Rob Manning, Radio News Reporter and Producer, Oregon Public Broadcasting
- Jon Mantay, County Administrator, Clackamas County
- Earlean Marsh, President, Friends of Barton Park & the Scenic Clackamas River

- Steve Matous, Exective Director, The Access Fund
- Mike McLees, Supervisor, Clackamas County Parks and Forest, Clackamas County
- Bob McGown, Chair, Oregon Section, American Alpine Club
- Regna Merrit, Executive Director, Oregon Natural Resources Council
- Scott Middelstadt, President, Ptarmigans
- Steve Morasch, Land Use & Property Rights Attorney, Schwabe, Williamson & Wyatt, P.C.
- Jim Morgan, Program Supervisor, Regional Parks and Greenspaces Department, Metro
- Tony Neal, Founder, Damascus for Open Space
- Jim Newman, Producer, Oregon Field Guide, Oregon Public Broadcasting
- Gretchen O'Brien, Grant Park CPO
- Tom Ortman, Natural Resources Coordinator, Forestry Department, Clackamas County
- Les Otto, Chair, Boring CPO
- Rod Park, District 1 Metro Council Representative
- Russ Pascoe, Chair, Cooper Spur Wild and Free Coalition
- Anne Pernick, Field Organizer/Clackamas County, Oregon League of Conservation Voters
- Jonathan Poisner, Executive Director, Oregon League of Conservation Voters
- Jeff Pratt, Carver Landowner
- Paula Preston-Mills, Clackamas County Parks and Forest, Clackamas County
- Sally Rask, Secretary, North Valley Chapter, Oregon Equestrian Trails
- Wayne Rawlins, Grant Manager, Oregon Parks and Recreation Department
- Kellie Rice, President, Madrone Wall Preservation Committee, Regional Coordinator-Western Oregon, The Access Fund
- Marcia Robertson, Member, Parks Advisory Board, Clackamas County
- Steve Roelof, Portland Chapter President, Native Plant Society of Oregon
- Bob Sallinger, Urban Conservation Director, Audubon Society of Portland
- Michele Scalise, Grants Project Coordinator, Oregon Parks and Recreation Department
- Peggie Schwarz, Executive Director, Mazamas
- Randy Shannon, City of Damascus
- Craig Smith, Member, Parks Advisory Board, Clackamas County
- Monty Smith, President, Friends of Forest Park
- Rob Smoot, Chair, Parks Advisory Board, Clackamas County
- Gail Snyder, Executive Director, Friends of Forest Park
- Kathryn Sofich, Council Policy Coordinator, District 1 Metro Council Representative Rod Park
- Steve St. Amand, Editor, *Canby Herald*
- David Stroup, Associate Editor, *Clackamas Review/Oregon City News*
- Mary Cook Swanson, Senior Planner, Department of Transportation and Development, Clackamas County
- Jennifer Van Houten, Treasurer, , Mazamas Council
- Jay Waldron, Real Estate & Land Use Attorney, Schwabe, Williamson & Wyatt, P.C.
- Jay Ward, Conservation Director, Oregon Natural Resources Council
- Dee Wescott, Mayor, City of Damascus
- Carol Witbeck, Friends of Barton Park & the Scenic Clackamas River
- Tom Wolfe, Metro South Team Leader, *The Oregonian*
- Jill Workman, Chair, Sierra Club, Oregon Chapter
- Dave Wright, Assitant Director, Oregon Parks and Recreation Department
- Jim Wright, City of Damascus
- David Zeps, , Mazamas Council
- Craig Zell, Zell & Associates
- Dan Zinzer, Director, Department of Business and Community Services, Clackamas County
- Joan Zuber, Vice Chair, South Clackamas CPO

Madrone Wall Preservation Committee  
5815 N.E. 31<sup>st</sup> Avenue  
Portland, Oregon 97211  
www.savemadrone.org  
Contact: Keith K. Daellenbach  
Secretary/Treasurer, Director  
503/691-4102  
kdaellenbach@att.net

**FOR IMMEDIATE RELEASE**



### **Clackamas County Commissioners Approve Madrone Wall for Parks Master Planning Process**

**Portland, Oregon -- 1 February 2006 --** Yesterday, the Clackamas County Board of Commissioners (BCC) unanimously accepted the Clackamas County Parks Advisory Board (PAB) recommendation that the Hardscrabble property (a.k.a. Madrone Wall) become part of an area for Clackamas River Watershed Protection and that it should not be sold to a private interest or mined.

The BCC unanimously supported implementation of the following specific recommendations for the property:

- Retained in public ownership.
- Included in the inventory of County lands for future master planning and consideration for development by the Parks Advisory Board and the staff. The master planning process will include, but not be limited to, a site analysis that identifies the amount of area for active and passive recreation uses, potential timber harvest, operations and maintenance needs, as well as budget considerations and responsible public ownership of the property.
- Included as a priority for master planning as part of the future Clackamas County Parks Department Master Plan, and
- Retained in its current status pending a master plan.

With acceptance of the PAB recommendations, the PAB will include the Hardscrabble property in its planning and budgeting process, along with the existing inventory of properties. The planning process will include additional input from the public. Because of the massive public support the Madrone Wall site has received to protect it from being quarried or turned into a housing development and the community interest in making it a park by citizens, local community planning organizations, elected City of Damascus officials, Carver businesses, and over two dozen recreational and conservation organizations, the PAB may work to accelerate the parks master planning process to allow for creation of a park, available for public access and re-established recreation, as early as 2007.

The Madrone Wall is a 44-acre site 2.2 miles east of Carver along County Scenic Highway 224. It has been owned by Clackamas County since 1937 and was for decades a site of public ecology education and open for recreational hiking, rock climbing, horseback riding, picnicking, and bird and flower viewing prior to its closure in the fall of 1997 as an ill-conceived County quarry plan was pursued. This plan was later narrowly averted as quarrying was deemed uneconomical. This compact site contains an uncommon stand of Pacific madrone and the only geologic feature of its kind in the northern Willamette Valley, a natural cliff face of Boring basalt soaring over 100 feet. Views over the nearby Clackamas River are stunning. This public site has a diverse and intact ecosystem including over 100 plant species with a few remaining old-growth Douglas fir and native wildflowers. It is the source of drinking water for nearby citizens and a clear, cool tributary stream supports the endangered salmon habitat in the Clackamas River designated as a National Wild and Scenic River. Please continue to respect Clackamas County's current "No Trespassing" posting at the Madrone Wall until the site is opened as a park.

The Madrone Wall Preservation Committee is a tax exempt 501(c)(3) Oregon all-volunteer public charitable organization focused on preserving and re-establishing access to the Madrone Wall of Clackamas County and to act as a parks advocacy organization for a future park at the site of this amazing civic treasure. As developments occur and progress is made on the parks master planning process, please look for updates at our website ([www.savemadrone.org](http://www.savemadrone.org)).

###